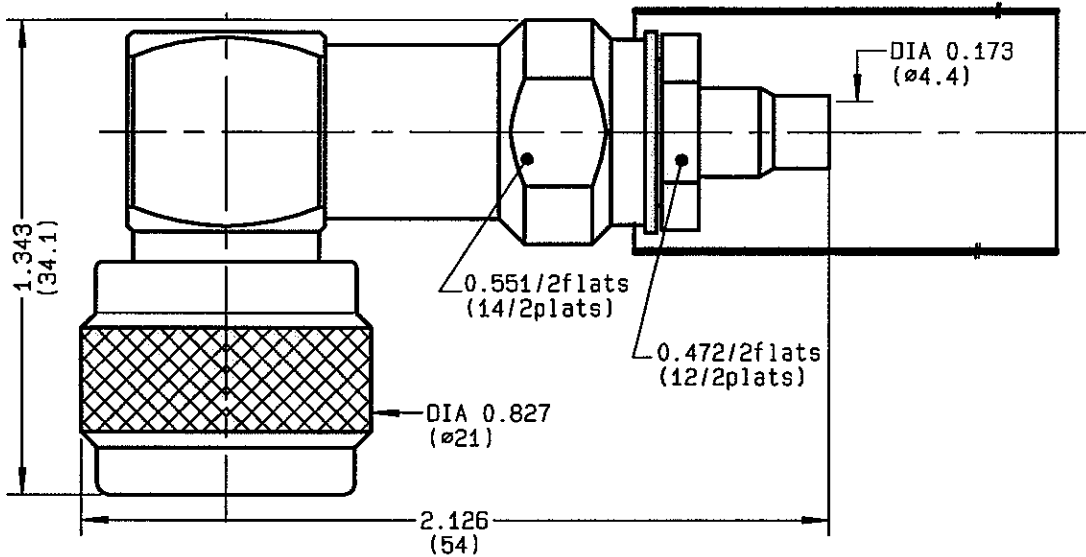


**RIGHT ANGLE PLUG CRIMP-TYPE
CABLE 4.13/50**

R161.191.000
SERIES N



NOMINAL IMPEDANCE	50 Ω
FREQUENCY RANGE	0-11 GHz
TEMPERATURE RATING	-55/+155 °C
V.S.W.R	AD * + x F(GHz)Maxi
RF INSERTION LOSS	TBD √F(GHz) dB Maxi
VOLTAGE RATING	850 Veff Maxi
DIELECTRIC WITHSTANDING VOLTAGE	1500 Veff Mini
INSULATION RESISTANCE	5000 MΩMini
HERMETIC SEAL	NA Atm.cm ³ /s
LEAKAGE (pressurized only)	IP 65
MECHANICAL DURABILITY	500 Cycles
WEIGHT	gr
SPECIFICATION	* 0-3 GHz. LEA 02COCN8-507 du 14-12-88

CABLES :	
OTHERS CHARACTERISTICS	
CABLE RETENTION	180 N Mini
CENTER CONTACT RETENTION	
Axial force - mating end	NA N Mini
Axial force - opposite end	NA N Mini
Torque	NA cm.N Mini
RECOMMENDED TORQUES	
Mating	130 cm.N
Panel nut	NA cm.N
Clamp nut	370 cm.N

CONNECTOR PARTS	MATERIALS	FINISH	(all values are given) in micrometers
BODY	BRASS	BBR 2	
OUTER CONTACT	BRASS	BBR 2	
CENTER CONTACT	BERYLLIUM COPPER, BRASS	GOLD 0.5 OVER NICKEL 2	
INSULATOR	PTFE	-	
GASKET	SILICONE RUBBER	-	
OTHERS PIECES	BRASS	BBR 2	

ISSUE	CREATION DATE	FILE PART-NUMBER
9827G00	29-MAR-85	EPC 96-07



The information given here is subject to change without notice.
Design changes may be in order to improve the product .

Connect to the future



RADIALL®

R161.191.000

ISSUE 9827600 SERIES N

HEATSHRINK SLEEVE

FERRULE

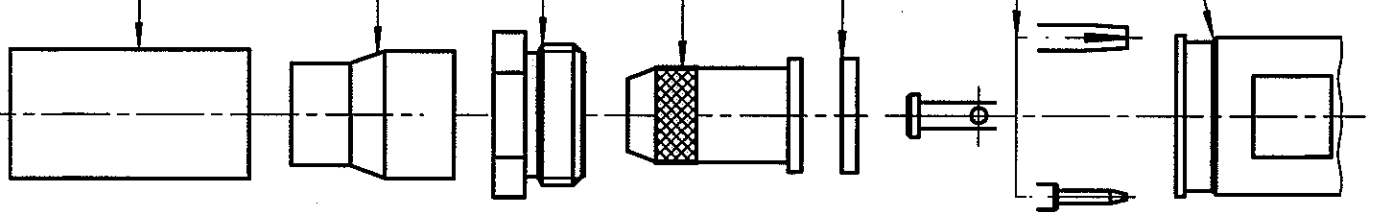
CLAMP NUT

CRIMP SLEEVE

INSULATOR

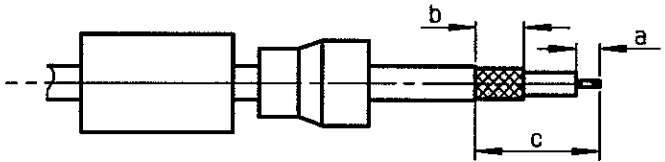
CENTRE CONTACT

BODY



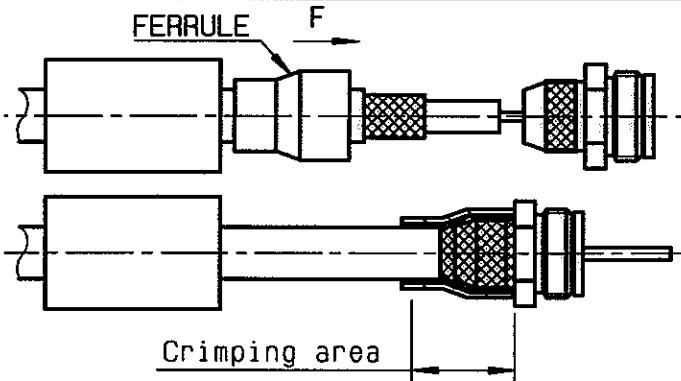
- ① Slide onto the cable the heatshrink and the ferrule .
Strip the cable .

NOTE: For FILECA F1703/93 cable please remove the foil during the stripping.
a= 0.364(9) , b= 0.394(10) , c= 0.945(24)

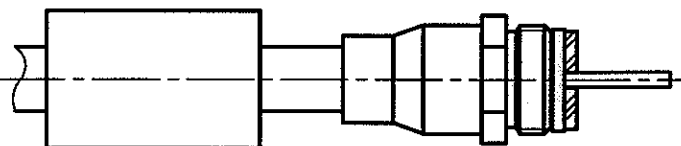


Stripping	a	b	c	d	e
inch	0.354	0.315	0.866	0	0
mm	9	8	22		

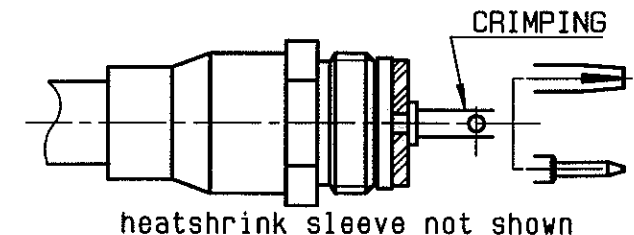
- ② Slide the clamp nut onto the crimp sleeve
Slide sub-assembly under the braid .
Slide ferrule over the braid against clamp nut . (In direction F)
Crimp the ferrule with crimping tool R282 293 000 (M22520/5-01)
+ dies R282 247 (M22520/5-61) .



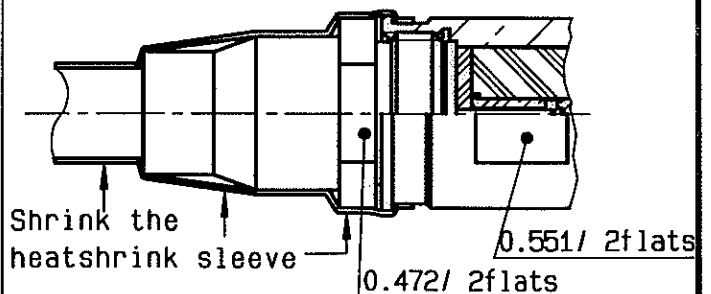
- ③ Cut the dielectric flush to crimp sleeve .
Mount insulator against crimp sleeve .



- ④ Slide the centre contact onto the cable inner conductor against insulator .
Crimp centre contact .
Crimping tool M22520/1-01 (R282 291) position 7 + positioner M22520/1-13 (R282 997) red turret .



- ⑤ Screw sub-assembly into the connector body .
(recommended coupling torque 32.74 in.lb)
Slide sleeve over ferrule and heatshrink sleeve in place .



PERRIN Y